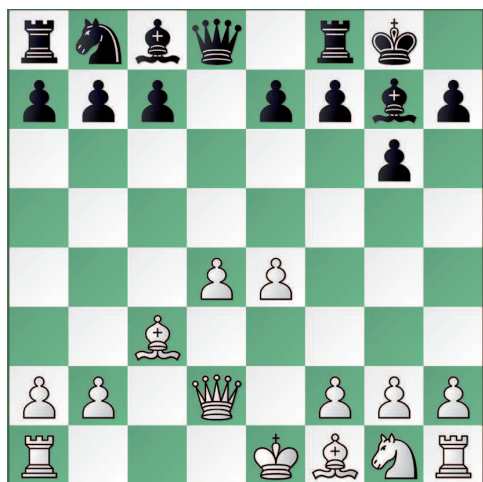


# BLACK HAS THE CHOICE

Evgeny Postny examines a modern Anti-Grünfeld variation

Grünfeld Defence D85: 1.d4 ♘f6 2.c4 g6 3.♗c3 d5 4.cxd5 ♗xd5 5.♕d2 ♖g7 6.e4 ♗xc3 7.♕xc3 0-0 8.♞d2



The side variation 5.♕d2 has been enjoying a certain popularity among strong players, there is a whole series of 2700s who in recent years have tested out this setup with White. White



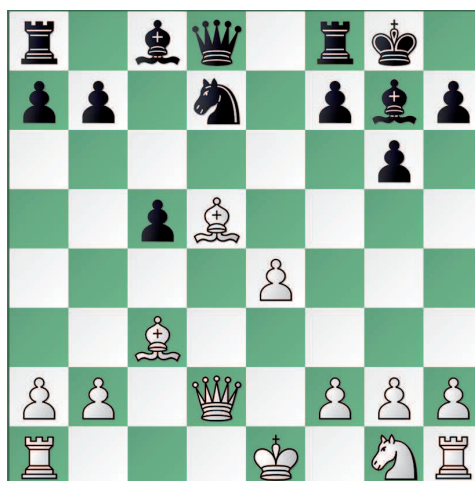
Alexander Moiseenko has found some new ideas for White in the 8.Qd2 line, but at the moment it still looks good for Black

would like to recapture on c3 with the bishop and then the fashionable move is 8.♞d2 (instead of 8.♗f3) and that is the subject of Evgeny Postny's article.

Black is well advised to immediately start proceedings against White's centre. This philosophy is also followed by the main move 8...c5 and after the critical 9.d5 there is a choice:

A) 9...♕xc3 10.bxc3 e6 allows 11.d6, which is double-edged but not necessarily bad for the second player. Moreover he can avoid this variation by first blockading the white d-pawn with 10...♞d6. After 11.f4 e6 12.♕c4 b5! 13.♕xb5 exd5 14.exd5 ♗d7 15.♕xd7 ♕xd7 Black had full compensation for the pawn he had sacrificed in Gelfand-Dominguez, whereas Moiseenko's innovation 11.h4 is unclear, but no more.

B) After 9...e6 10.♕c4 (or 10.♕xg7 ♗xg7 11.♕c4 ♗d7) 10...exd5 11.♕xd5 Grünfeld-guru Avrukh, playing against Ulibin, sent his knight off towards f6 with 11...♗d7.



White cannot maintain a piece on d5 and after 12.♗f3 ♗f6 13.0-0 ♗xd5 14.exd5 ♞d6 he had no advantage whatsoever. With the pawn sacrifice 10...♕xc3 11.bxc3 b5!?, moreover, Black has at his disposal another good option.

Nor should one despise the alternative 8...♗c6, intending to provoke the white pawn into advancing and then to undermine it. That has worked well so far, Black has equality in variations such as 9.♗f3 ♖g4 10.d5 ♕xf3 11.gxf3 ♗e5 12.♕e2 c6 (Moiseenko-Nepomniachtchi).

**Conclusion:** 5.♕d2 in conjunction with 8.♞d2 hardly offers White any prospects of an advantage. As Postny shows, Black even has the choice between different equalising variations.